

STARHOTELS®
PREMIUM

E.c.h.o.
MILANO

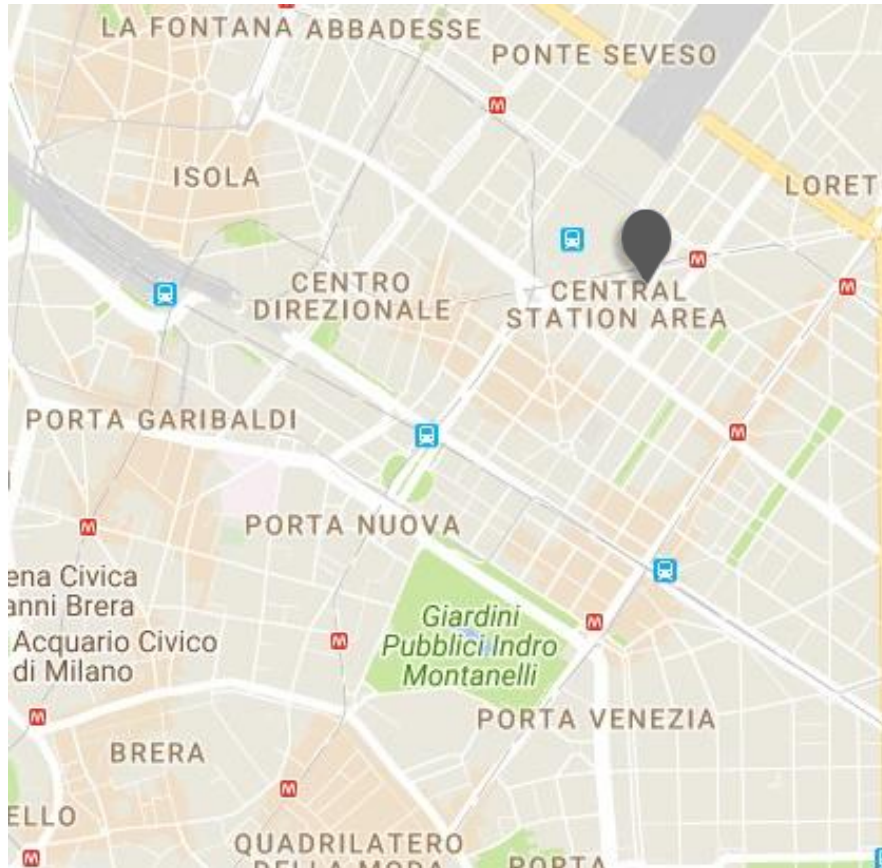


Eco contemporary hotel

The Starhotels E.c.ho. - Ecological Contemporary Hotel - is one of the first hotels in Milan created to respond to the needs of a cosmopolitan, ecologically-aware clientele. Each of the 143 rooms and suites combines the principles of eco-sustainability with the comfort of a 4-star hotel. The materials, furnishings and fabrics have been awarded environmental certifications, while the warm natural colours create a welcoming, relaxing atmosphere. At Starhotels E.c.ho., every detail has been designed to give guests a pleasant stay in a relaxed, efficient environment.



Certification of the sustainability performance of travel and tourism businesses



Location

Only 100 metres from the Central Station and not far from the the stunning new skyline of Porta Nuova

Distances

Railway station:

air terminal: Km 0,1

Highway: Km 6

Underground:

MM2 Caiazzo MM2 - MM3 Stazione Centrale

Airport:

Linate Km 8 - Malpensa Km 50

Fairgrounds:

Milano (City) Km 4 - Milano (Rho) Km 12

Viale Andrea Doria, 4 - 20124 Milano - ITALY

T +39 02 67891 F +39 02 66713369

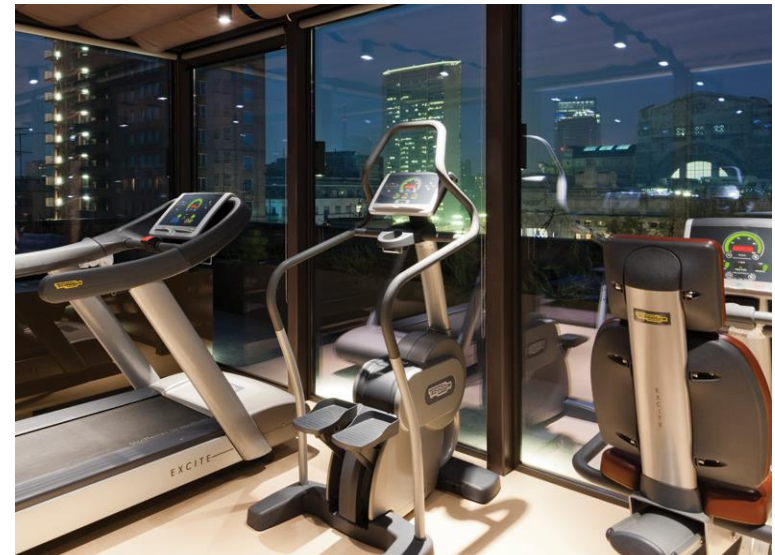
echo.mi@starhotels.it

starhotels.com

Restaurant & Bar

The airy atmosphere of the Orto Green Food & Mood by Eataly restaurant is where the hotel's philosophy of respect for the environment and the wellbeing of guests enjoys the exclusive partnership of Eataly.

With its bright, peaceful atmosphere and view on the patio, the Orto Green Food & Mood by Eataly bar is the ideal place to relax with a coffee or aperitif, or enjoy a quick snack.



E.c.h.o.

MILANO



143 Rooms

80 Superior
50 Deluxe
7 Junior Suite
6 Suite

The 143 rooms and suites, with their natural colours, attractive furnishings and fresh, light-filled interiors offer an oasis of calm where guests can take a break from the city's high energy.





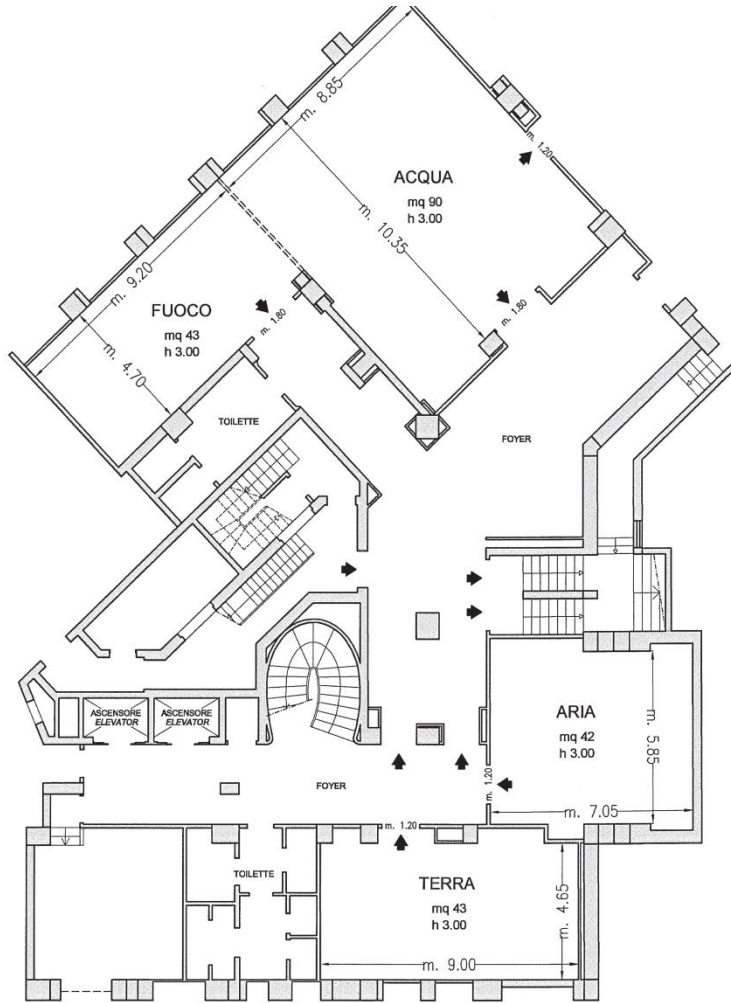
Meetings & Events

Meeting rooms: 5

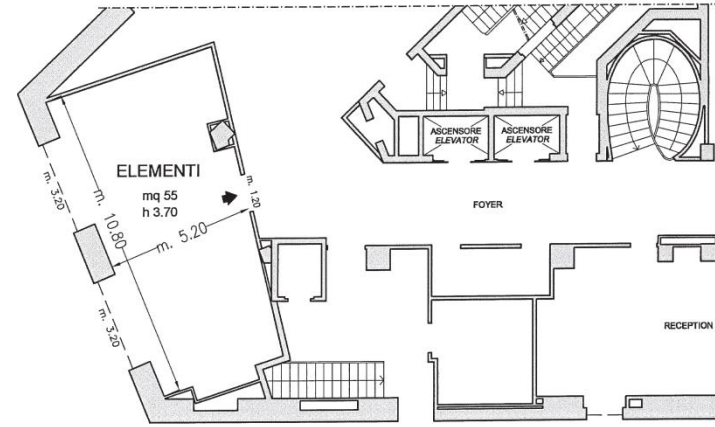
Capacity (theatre style): 100 max

The hotel has five meeting rooms, which are able to accommodate up to 100 participants. The rooms are in line with green construction standards and offer high-tech equipment.





Piano -1 / Basement



Piano Terra / Ground Floor

- Uscite di sicurezza / Emergency Exits
- - - - Finestre / Windows
- ===== Pareti mobili / Modular Walls
- Colonne / Columns

E.c.ho.

MILANO

Sale riunioni Meeting rooms	Area mq Area sq.ft.	Lung. x larg. mt. L x W ft.	altezza mt. height ft.	teatro theatre	banchi scuola class room	Tavolo unico ferro di cavallo conference table/ U-shape	cabaret style^	cocktail reception	banchetto banquet
Elementi °	55 592,01	10,80x5,20 35,43x17,06	3,7 12,13	55	30	30/25	24	50	40
Acqua	95 1022,6	10,35x8,85 33,95x29,03	3 9,84	100	40	40/36	50	100	84
Fuoco	43 462,84	9,20x4,70 30,18x15,42	3 9,84	40	30	22/20	-	30	-
Aria	42 452,08	7,05x5,85 23,12x19,19	3 9,84	30	20	15/12	12	20	15
Terra	43 462,84	9x4,65 29,52x15,25	3 9,84	40	30	22/20	-	30	-

° Luce naturale / Daylight